

Investing in Louisville's Future

Dan Mann, A.A.E.
Executive Director

Louisville Regional Airport Authority





SDF Celebrates
ANOTHER
Record Year

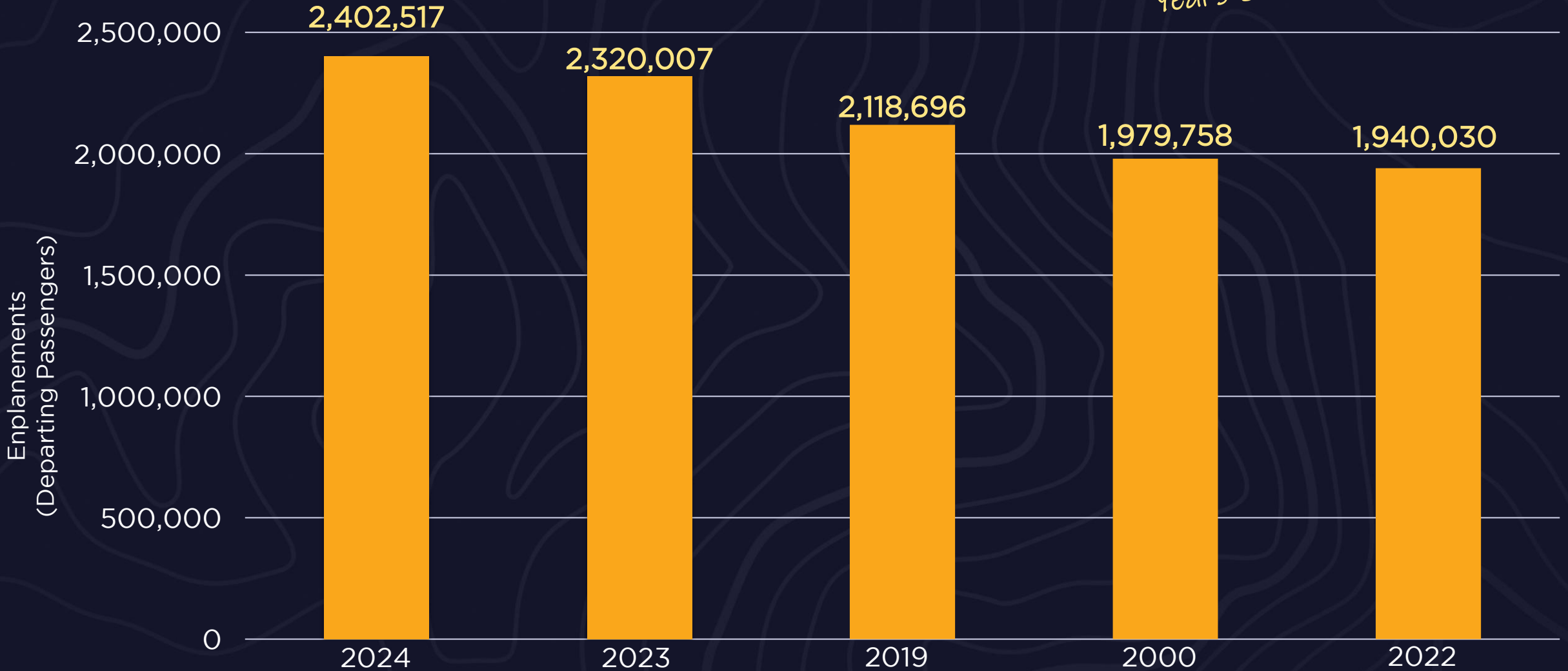
4.8M

Total Passengers

Doing it Better

Record Setting Passenger Traffic

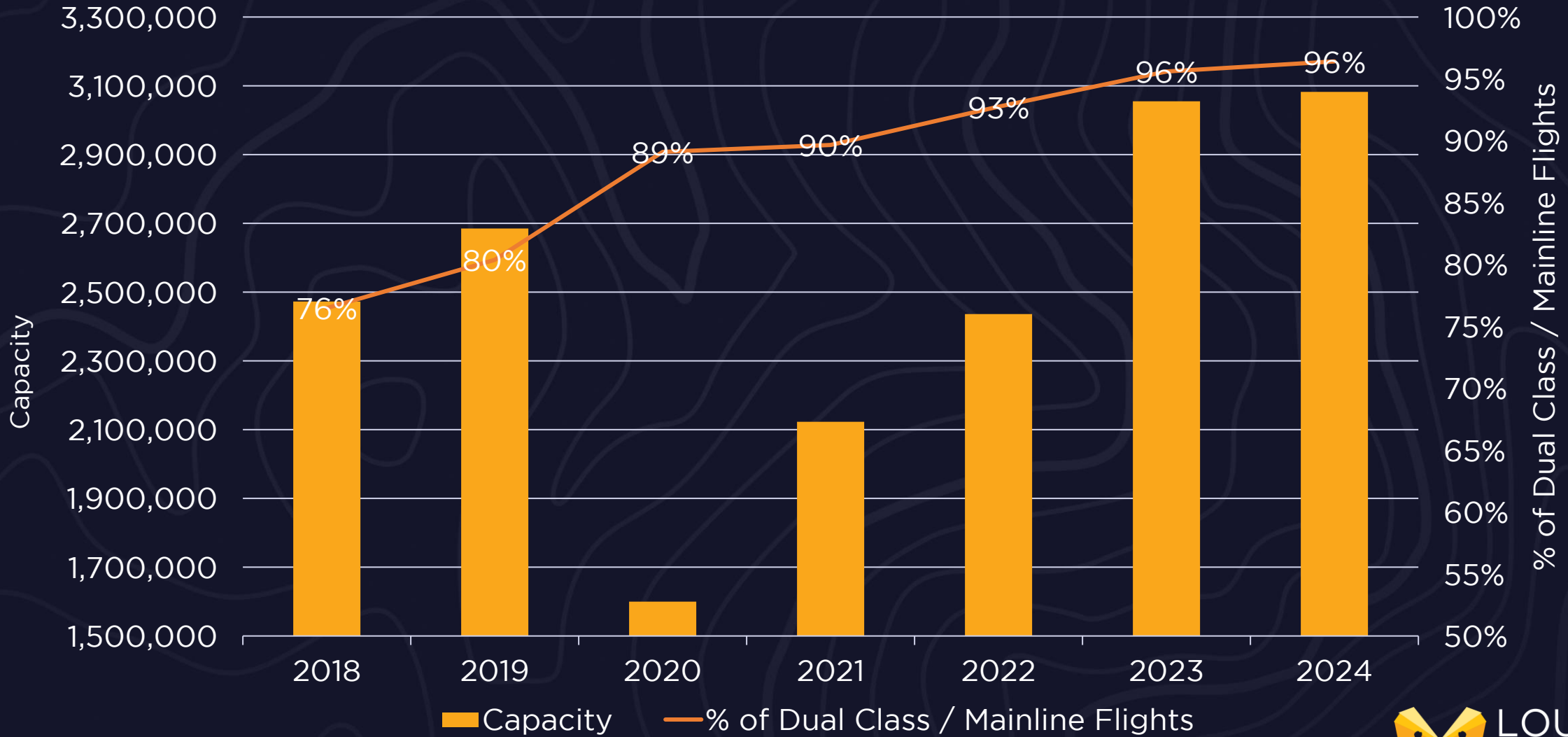
Four of SDF's Top 5 Busiest Years Ever have been since 2019



Doing it Better

Growth of Dual-Class and Mainline Jets

Average aircraft size at SDF is up 25% since 2018



SDF Capacity Increases

20 nonstop routes
increased capacity
by **double-digits**

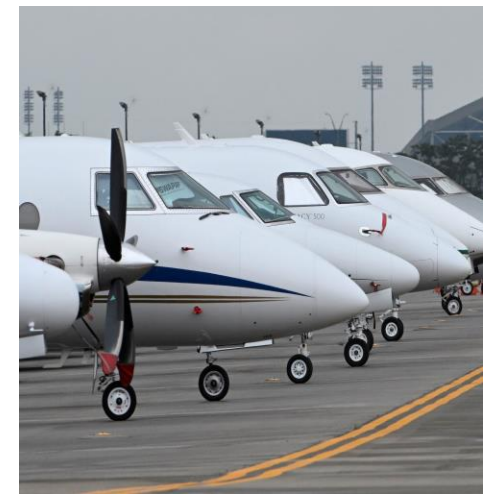
25 total routes
increased capacity
in 2024





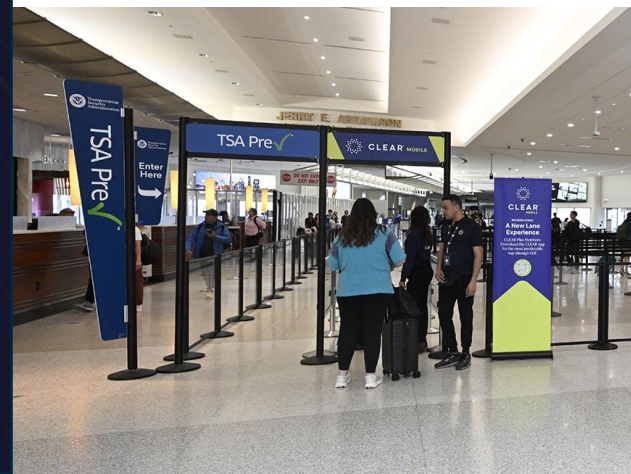
Derby 150

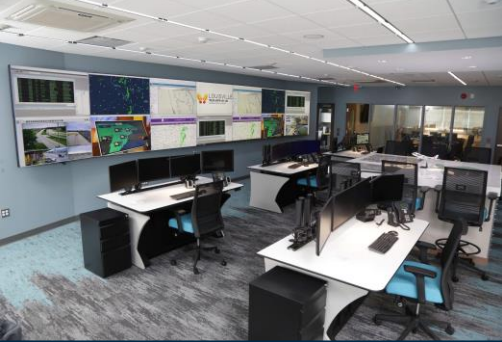
- 34,000+ scheduled arrivals on Wednesday-Friday
- Busiest Outbound Ever: 27,000+ seats on Sunday and Monday
- 16 Nonstop Routes Added
- SDF Ramp Control



Doing it Better Investing in the Passenger Experience

- Airport Operations Dept. 'Fixers and Fillers'
- Baggage Claim Assistance
96% of all bags received within in 30 minutes
- CLEAR Mobile at SDF
Nearly 80,000 screened in 2024
- TSA PreCheck and Standard Screening Queue Support
- Airline Ticket Counter Line Management





Airport Operations Command Center and Security Upgrades
\$19.2 million

Rental Car Facility and Enabling Projects
\$30 million

Geothermal Wellfield and Ramp (Phase 1)
\$21.7 million

Upgrades to Terminal Mechanical Systems
\$15.5 million

“Signature Louisville” Project and Rental Car Access Tunnels
\$5.7 million

SDF Next Program

Completed Terminal Projects

\$149 million invested

Completed through CY2023

Replacement of Terminal Passenger Boarding Bridges
\$22.4 million

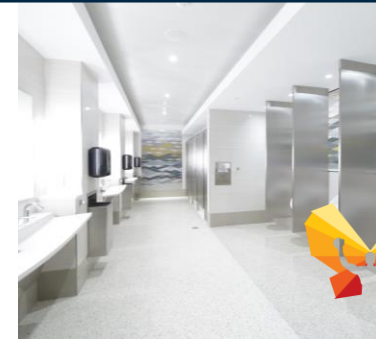
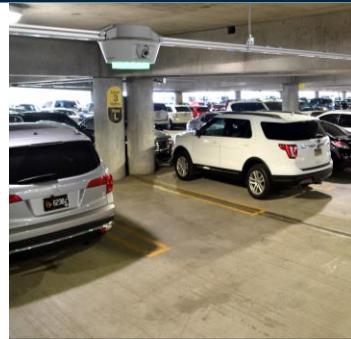
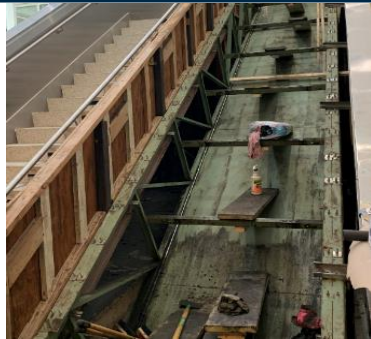
Elevator, Escalator and Moving Walkway Replacement
\$10 million

Parking Improvements: Park Assist
\$1.3 million

Parking Improvements: All SDF Lots Enhanced
\$15.1 million

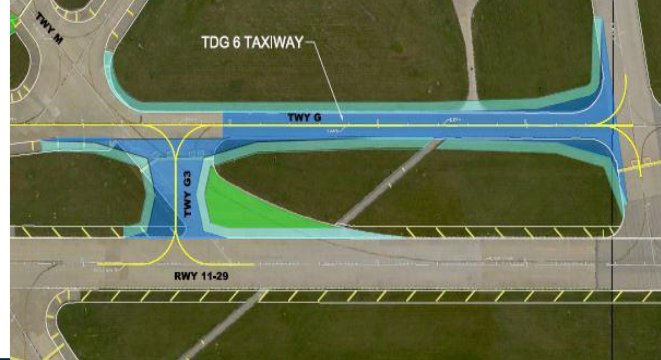
Baggage Claim Restrooms – Men’s, Women’s, All-Gender and Mother’s Room
\$2.3 million

Terminal Covered Pedestrian Walkways and Pet Relief Area
\$5.5 million





Northwest Quadrant Development and Taxiway A Connector
\$6.7 million



Taxiway G Reconstruction (Phase 1)
\$9 million



Taxiway G Reconstruction (Phase 2)
\$9.6 million



West Cargo Apron - Ramp 23 Construction
\$23.7 million

SDF Next Program

Completed Airfield Projects

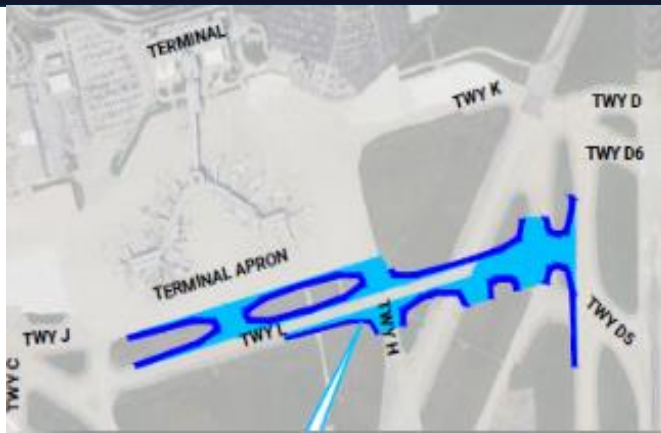
\$103 million invested

Completed through CY2023

Airfield Lighting and Signage Upgrades
\$14.9 million



Taxiway L Extension (Phase 1)
\$12.8 million



Runway and Taxiway Pavement Rehabilitation
\$23.5 million



Terminal Electrical Switchgear Project
\$2.25 million





SDF Next Program

2024 Terminal Projects | \$56 million invested

- Geothermal (Phase 2, Landside) - \$28 million
- New Baggage Handling System and Baggage Carousels - \$10 million
- Rental Car Counters, Airport Information Center and Other Baggage Claim Improvements - \$18.3 million
- Louisville Tourism Welcome Center Opens



SDF Next Program

2024 Airfield Projects | \$30 million invested

- East Airfield Electrical Vault - \$5 million
- Taxiway L Extension (Phase 2) - \$13.6 million
- Runway and Taxiway Pavement Rehab - \$7.5 million
- East Runway Lighting Replacement - \$3.4 million

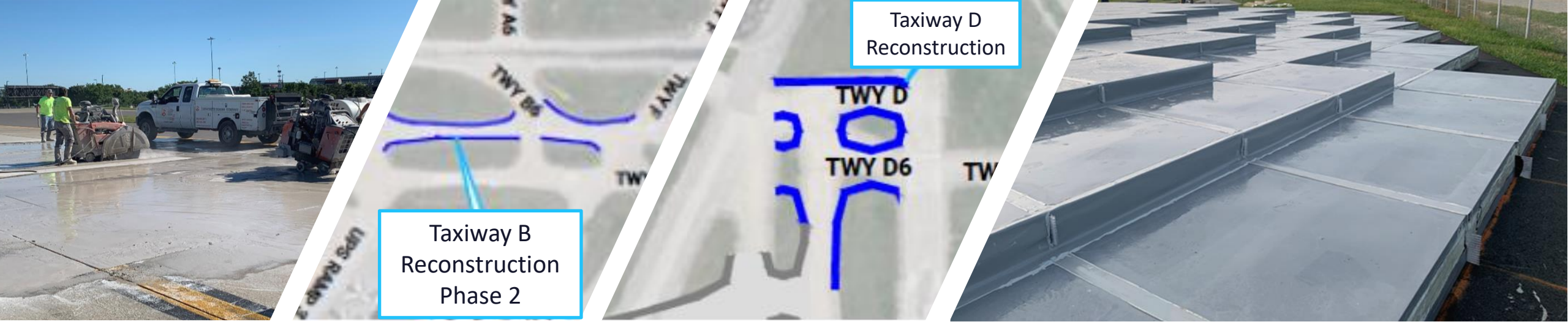




SDF Next Program

2025-2026 Terminal Projects | \$201 million investment

- Security Checkpoint Expansion - \$45 million
- SDF MicroGrid - \$32 million
- Geothermal (Phase 3, Airside) - \$20 million
- Terminal Roadway Realignment - \$49.5 million
- Airside Concourse Improvements - \$49.2 million
- SDF Enhanced Parking - \$5.5 million



SDF Next Program

2025-2026 Airfield Projects | \$81 million investment

- Taxiway B Reconstruction (Phase 1) - \$11.2 million
- Taxiway B Reconstruction (Phase 2) - \$11.2 million
- Taxiway D Reconstruction - \$17.5 million
- East Runway Engineered Materials Arresting System (EMAS) (Phase 1) - \$14.2 million
- West Airfield Electrical Vault - \$11 million
- West Runway Safety Area Grading Improvements - \$6 million
- Runway and Taxiway Pavement Rehabilitation - \$10 million



SDF Next Program

Future Projects |

\$515 million investment

Projects include:

- Ticketing Level Enhancements - \$20 million
- Terminal Exterior Upgrades - \$52 million
- Parking Garage - \$110 million
- East Runway EMAS System (Phase 2) - \$20 million
- Taxiway A Extension - \$15 million



Cargo @ SDF | A Logistics Leader



- Home to UPS Worldport® and base of UPS Airlines
- **3rd** busiest cargo airport in **North America**
- **6th** busiest cargo airport in the **world**
- Over 380 daily flights
- Millions of pounds of critical, life-saving cargo and products distributed annually
- UPS invested \$220 million in new hangar



TOP 10 BUSIEST AIRPORTS

CARGO

2023		2022	VS 2023
1	Hong Kong, Hong Kong HKG	1	+3.2%
2	Memphis, USA MEM	2	-4.0%
3	Shanghai, China PVG	4	+10.4%
4	Anchorage, USA ANC	3	-2.4%
5	Incheon, Korea ICN	6	-6.9%
6	Louisville, USA SDF	5	-11.1%
7	Miami, USA MIA	8	+1%
8	Doha, Qatar DOH	11	+1.5%
9	Los Angeles, USA LAX	9	-14.9%
10	Taipei, Taiwan TPE	7	-16.8%



Powering the Regional Economy

\$10.4 Billion
in Economic Impact

\$451.1 Million
contributed to State and
Local Taxes

\$1 of every \$7
in Louisville Metro tax revenue
from Airport Operations

82,723 Jobs
1 in 8 jobs in Louisville Metro from
Airport Operations



SDF's Invested in the Future

Looking ahead to...

- More Air Service growth
- More SDF Next Program progress
- More Positive Momentum

**Continuing to be a
Best in Class Airport.**

Questions?

